

Welcome Transplant Social Workers!

be the
CHANGE
you wish
to SEE
in the
WORLD

STSW Annual Meeting

*Friday, October 23, 2020
Via Virtual Platform*

Secretary's Report

- Dawn Warfield, LCSW-C, CCTSW-MCS
- Johns Hopkins Hospital
- Minutes from the 2019 Annual Meeting are available on the website.



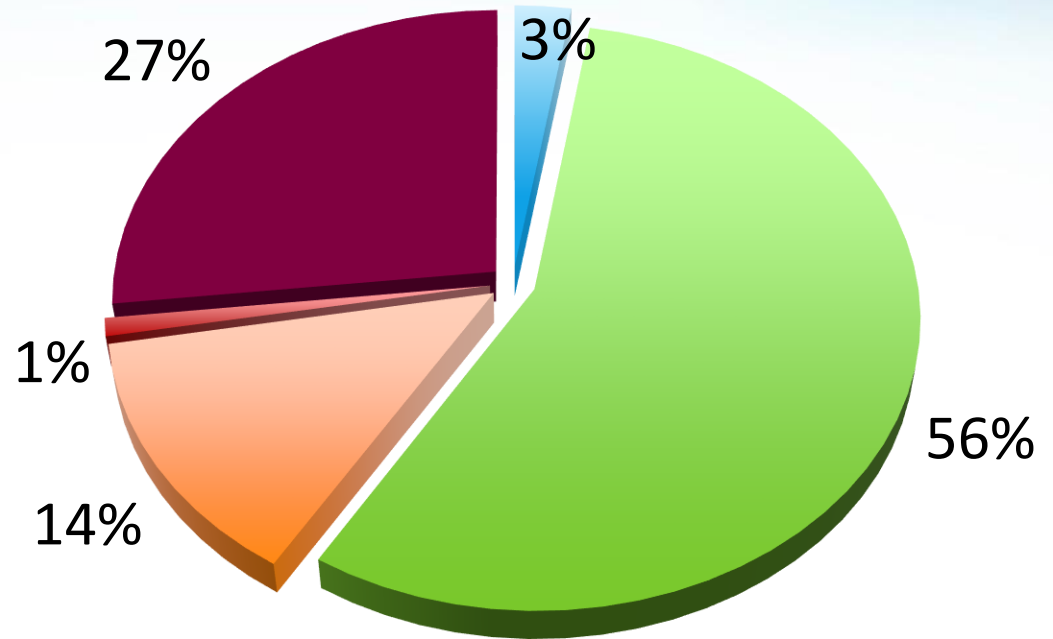
Treasurer's Report

- Kristen DeVoe, LICSW, CCTSW
- Beth Israel Deaconess Medical Center

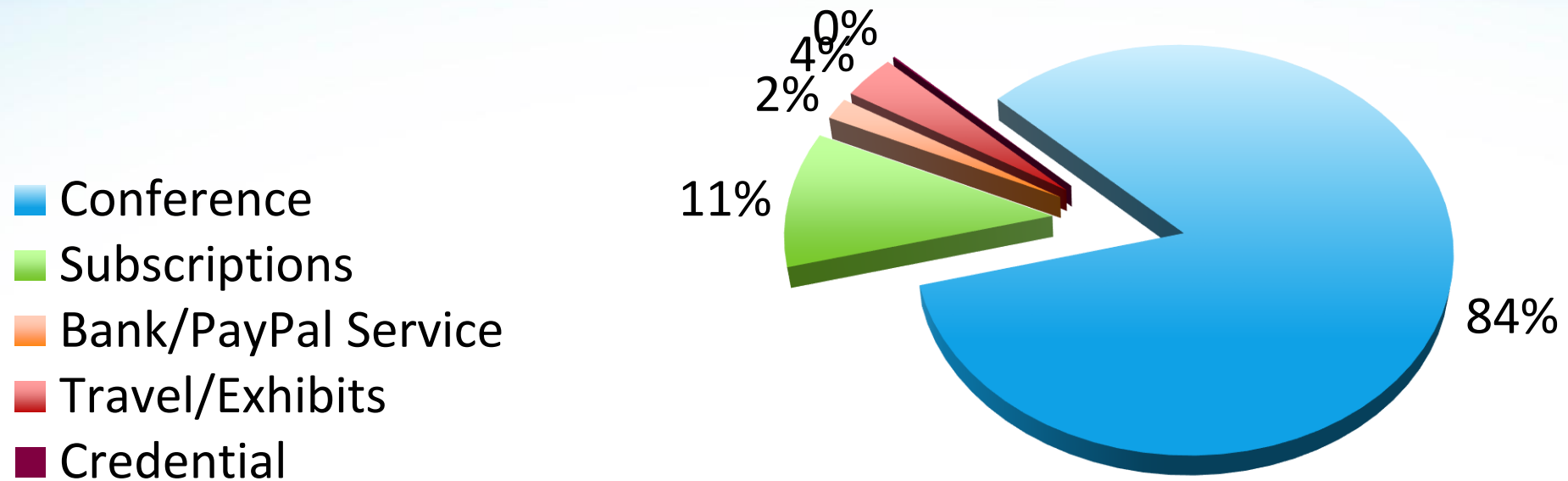


Treasurer's Report: 2019 Income

- Credential
- Conference Registration
- Membership
- Web Ads
- Conference Exhibitors



Treasurer's Report: 2019 Expenses



Brief Highlights of 2020

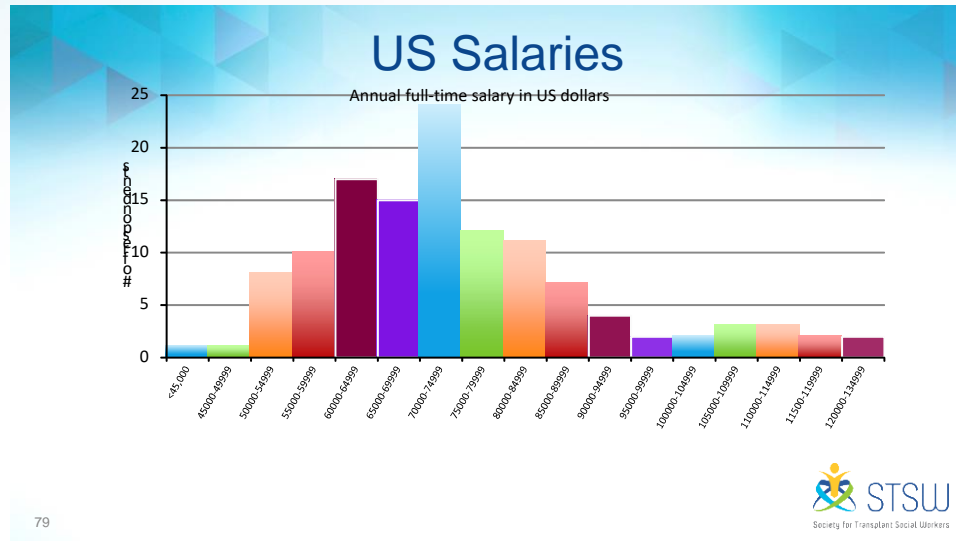
Our progress, our vision

2020 STSW Survey

*Survey invitations were sent to al 349 STSW members .
155 social workers responded.*

STSW Member Survey

- Laurie McDonald designs the annual survey and tallies all the valuable information. This year, it is available to peruse on the STSW website.



- Interesting facts:
 - Our members spend the majority of time on evaluations, counseling/support, advocating, making referrals for financial assistance, and providing education on how to return to work after transplant.
 - More than half of our members are credentialed and more than 89% are licensed at the highest level in their state. These numbers have trended higher over the past 3 years.



Transplant Management Forum

STSW was planning to be an exhibitor again this year at the Transplant Management Forum in Las Vegas, NV, in April. Due to the COVID-19 pandemic, the Forum was canceled.

We plan to exhibit at this conference again in 2021 to keep our name in front of hundreds of transplant managers.

CEUs

- We work with UNOS Connect to be an additional source for transplant related Social Work CEUs for credentialing.
- We hope to learn from this virtual learning experience this year to continue to offer online learning opportunities going forward.

Membership/Scholarship Report

Katie Newton, LICSW, CCTSW, Baystate Transplant Program – Membership Chair

We have 479 members (152 are new members). The membership year is now on a rolling calendar rather than an annual calendar. Your renewal will be due annually on the date you joined/renewed in 2020.

You will get 3 email reminders. (2 before & 1 after renewal date)

19 scholarships were awarded this year by the STSW.



Committee Participation Opportunities

- **2020** - We have 15 committees. Every board position has a committee to support the work.
- Board positions can be viewed on the STSW website under the About the Board Members tab.
- Please refer to the “ABOUT STSW” tab on the conference website page and click on “STSW COMMITTEE SIGN UP” for:
 - Committee descriptions
 - To sign up to participate on a committee (or more than one!)

The Society for Transplant Social Workers Appreciates Our 2020 Exhibitors



STSW Credentialing



Credentialing Update

As of 9/30/2020:

	2020 Newly credentialled	Total credentialled	Total re- credentialled
CCTSW	38	213	26
CCSW-MCS	0	6	2
CCTSW-MCS	14	44	3
Totals	52	263	31

Credentialing Update

Home → Credentials → Current Credential Holders

Current Credential Holders

The following social workers currently hold one of these credentials:

- Certified Clinical Social Worker – Mechanical Circulatory Support (CCSW-MCS)
- Certified Clinical Transplant Social Worker (CCTSW)
- or the dual credential, Certified Clinical Transplant Social Worker and Certified Clinical Social Worker – Mechanical Circulatory Support (abbreviated as CCTSW-MCS)

Certifications are valid for three years and expire on June 1 of the year indicated below. If you hold one of these credentials and your name does not appear in the table below, please send a picture of your certificate to credentialing@stsw.org.

Show entries Search:

Last Name	First Name	Certification	1st Certified	Expiry
Allen	Anne	CCTSW	12/17/18	2021
Alvarez	Heather	CCTSW	3/29/11	2020
Artin	Katherine	CCTSW-MCS	02/13/14	2022
Auger	Hannah	CCTSW	12/19/18	2021
Baker	Susan	CCTSW	1/4/17	2020
Bates	Julie	CCTSW	4/6/11	2020
Beard	Bethanie	CCTSW	12/16/18	2021
Beckwith	Sharon	CCTSW	8/30/2019	2022
Berry	Eilen	CCSW-MCS	04/04/18	2021
Bielaczyc	Maciej "Mike"	CCTSW	9/14/2019	2022

[Edit](#)

Showing 1 to 10 of 201 entries [Previous](#) [Next](#)

STSW Credentials

Are you a **current credential holder**? If not, check out [eligibility](#) and [recertification](#) requirements and start your [application](#) today.

Appointments of Board Members

- Vice President – Clifton Hill (to be voted in by the membership at this conference)
- Secretary – Dawn Warfield (to be voted in by the membership in 10/2021)
- Membership Chair – Katie Newton
- Liver Chair – Kelli Swan-Vranish
- MCS Chair – Kristin Malaer
- Multicultural Issues Chair – Daniela Matz
- Historian/Nominating Chair – Deb Gordon
- Exhibitor Chair – Genevieve Anderson
- Heart Committee Chair – Open

Election

- We elected a Treasurer and Secretary last year and will be electing a President and Vice President this year.
- We present the candidates for President and Vice President, President, Molly Dugan, and Vice President, Clifton Hill.



Appreciations

- ✦ 2020 Virtual Conference Committee: Chrissi White/Site Chair (Advent Health), Jessica Perry/Program Chair (Duke Health), Nicole Bernier (Tampa General), and Maureen Decker (Tampa General)
- ✦ Kay Kendall – National Conference Chair
- ✦ Beth Piotrowicz – National Program Co-Chair
- ✦ Kathy Daley – National Program Co-Chair
- ✦ Genevieve Anderson – National Exhibitor Chair
- ✦ Mary Fisher – Tech Committee Chair
- ✦ Katie Newton – Membership Chair
- ✦ Kristen DeVoe – STSW Treasurer
- ✦ Barb Levine – STSW Virtual Assistant

Appreciations

- ✦ Executive Committee – 8; Board of Directors – 27
- ✦ We'd like to thank all members who have served on a committee or taskforce.

Awards

Lee Suszycki Memorial Award

Lee Suszycki was the founder and first president of our Society. She was passionate about many things, including education, writing, publication, social work and transplantation. The Society for Transplant Social Workers is a direct outgrowth of her vision for social workers practicing in transplantation.

Lee Suszycki Memorial Award

Kristen DeVoe, LICSW, CCTSW

Beth Israel Deaconess Medical Center Transplant Institute, Boston, MA

Adult Kidney/Liver Living Donor Social Worker



Awards

Judy Midlefort Memorial Award

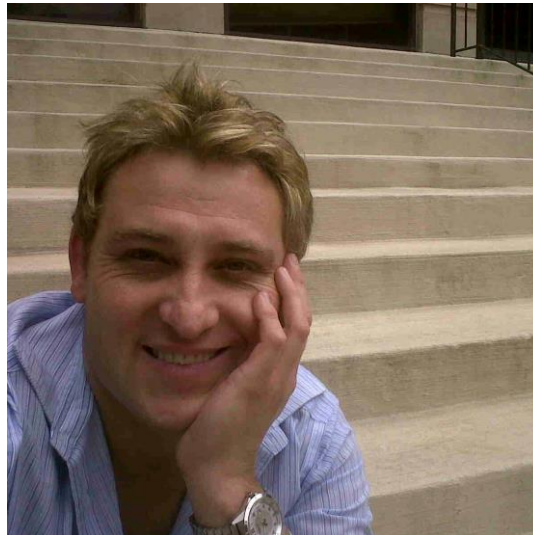
Judy Midelfort was a founding member of the Society, one of the first to publish on psychosocial issues in transplantation and a strong supporter of professional growth and education.

Judy Midelfort Memorial Award

Tobias Kleinhans-LeRoux, CCTSW

Netcare Transplant Division, Western Cape Province, South Africa

Adult Heart/Kidney and Living Donor Social Worker



2020 and beyond

- You can host a conference in your city!!
- STSW now has a national conference committee, national exhibitor chair, and a corporate meeting planning contract. But we need a local committee to make the conference a success.
- We are ready to choose a hotel for 2022 and 2024. Will it be your city? Let us know if you are interested.



Conference 2020

Orlando, Florida!!

October 18-21, 2021

Monday – Thursday

Loews Portofino Bay Hotel